



CARATTERISTICHE ELETTRICHE / Electric characteristics

Tensione Nominale - Nominal Voltage	0/750	V _{AC} - 50/60 Hz
Tensione di prova fase/fase - Phase to phase test voltage	3100	V _{DC} (2 s)
Tensione di prova fase/terra - Phase to ground test voltage	3500	V _{AC} - 50Hz (2 s)
Categoria climatica - Climatic class	-25 / +85 °C	



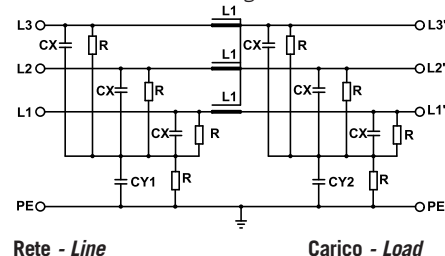
FIN 1200HV	Corr. nomin TA=40°C	Nominal current (A) TA=50°C	Σ Cx (μF) ± 5%	Cy1 (nF) ± 5%	Cy2 (nF) ± 5%	L1 (mH) ± 10%	Pot diss (W) Pow loss (W)
.016.V	16	16	48	100	100	2	14
.030.V	30	29	48	100	100	2	11
.050.V	50	48	48	100	100	2	10
.080.V	80	78	48	100	100	1.8	35
.100.V	100	96	48	100	100	1.5	42
.150.V	150	146	48	100	100	1.3	74
.200.V	200	195	48	100	100	0.9	90
.280.V	280	275	48	100	100	0.8	80
.280.B	280	280	48	100	100	0.8	78
.360.B	360	355	48	100	100	0.35	152
.500.B	510	500	48	100	100	0.35	196
.750.B	760	750	48	100	100	0.23	98
.1000.B	1050	1000	48	100	100	0.22	101
.1250.B	1300	1250	48	100	100	0.21	105
.1500.B	1550	1500	48	100	100	0.20	120
.1750.B	1800	1750	48	100	100	0.20	130
.2000.B	2050	2000	48	100	100	0.18	140

Corrente di fuga totale a 230 V fase verso terra a 50 Hz / 40°C
Total leakage current at 230 V phase to ground 50 Hz / 40°C

Nominale/Nominal <3mA
Condizione peggiore/Worst condition <10mA

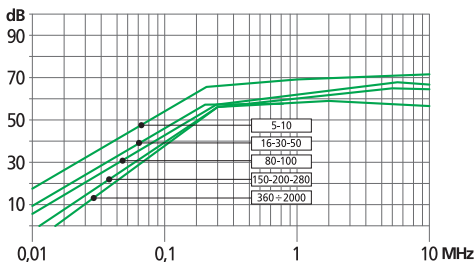
SCHEMA ELETTRICO FIN1200HV

FIN1200HV Electric diagram



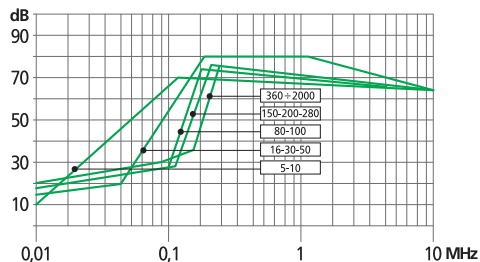
ATTENUAZIONE DI MODO COMUNE

Common Mode Attenuation



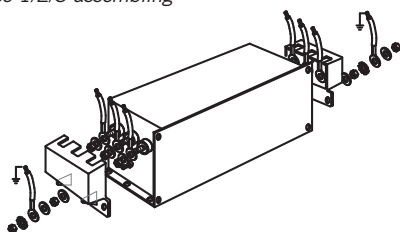
ATTENUAZIONE DI MODO DIFFERENZIALE

Differential Mode Attenuation



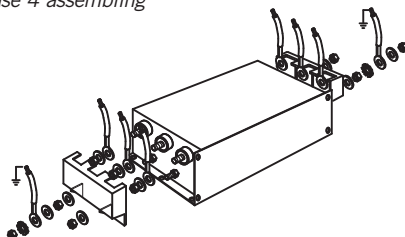
ASSEMBLAGGIO CUSTODIA 1/2/3

Case 1/2/3 assembling



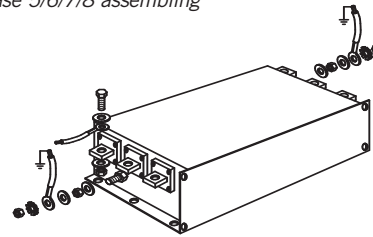
ASSEMBLAGGIO CUSTODIA 4

Case 4 assembling



ASSEMBLAGGIO CUSTODIA 5/6/7/8

Case 5/6/7/8 assembling

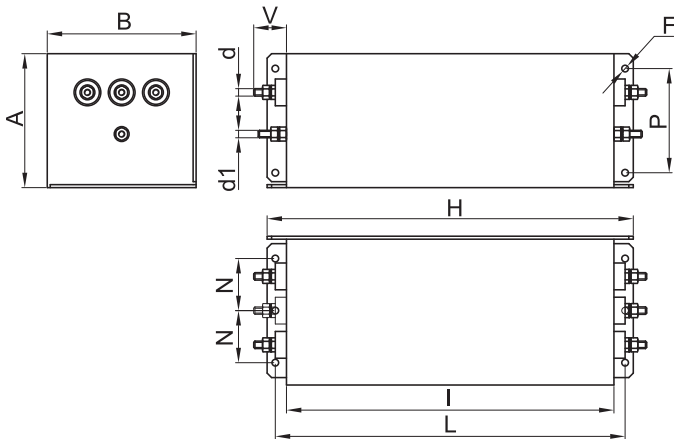


DIMENSIONI MECCANICHE (mm) / Mechanical dimensions (mm)

FIN1200HV	A	B	d (ø)	d1	d2	d3	V	F	H	I	L	N	P	Peso Kg Weight Kg	Custodia Case
.016.V/.030.V	90	100	M5	M 5	—	—	20,5	4,5	246	220	235	35	70	3,6-3,8	2
.050.V	90	100	M6	M 5	—	—	28	4,5	246	220	235	35	70	4,1	2
.080.V/.100.V	90	185	M8	M 8	—	—	25	6,5	356	320	340	77,5	70	11,7	3
.150.V/.200.V	90	220	M10	M 10	M 10	—	29	6,5	356	320	340	95	70	14,4-15,8	4
.280.V	90	220	M12	M 12	M 10	—	30	6,5	356	320	340	95	70	16,1	4
.280.B	90	220	8,5	M 12	10	25	42	6,5	356	320	340	95	70	16,9	5
.360.B	130	230	8,5	M 10	10	25	42	6,5	420	380	400	100	100	24,7	5
.500.B	130	230	10,5	M 10	15	30	48	6,5	510	450	480	100	100	30,5	6
.750.B	160	250	13,5	M 12	20	40	94	8,5	510	450	480	100	110	31	7
.1000.B	180	350	13,5	M 12	20	60	97	8,5	610	550	580	150	130	59	8
.1250.B	180	350	13,5	M 12	20	60	97	8,5	610	550	580	150	130	59	8
.1500.B	180	350	13,5	M 12	20	60	97	8,5	610	550	580	150	130	59	8
.1750.B	180	350	13,5	M 12	20	60	97	8,5	610	550	580	150	130	59	8
.2000.B	180	350	13,5	M 12	20	60	97	8,5	610	550	580	150	130	59	8

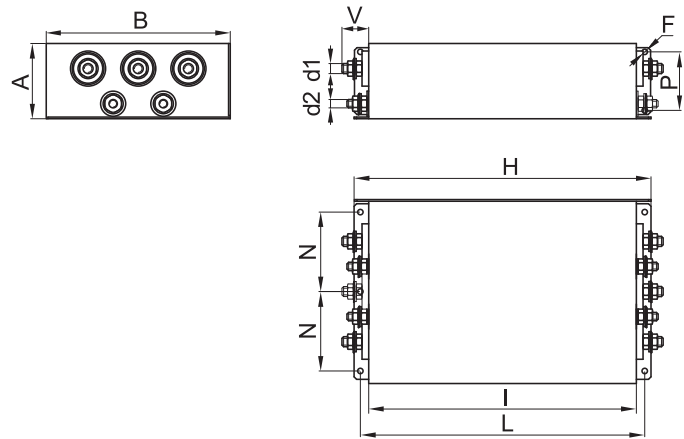
CUSTODIA 2/3

Case 2/3



CUSTODIA 4

Case 4



CUSTODIA 5/6/7/8

Case 5/6/7/8/9

